

HOW TO EXPORT DATA FROM DRONEROVER AND IMPORT TO SURFER AND GOOGLE EARTH



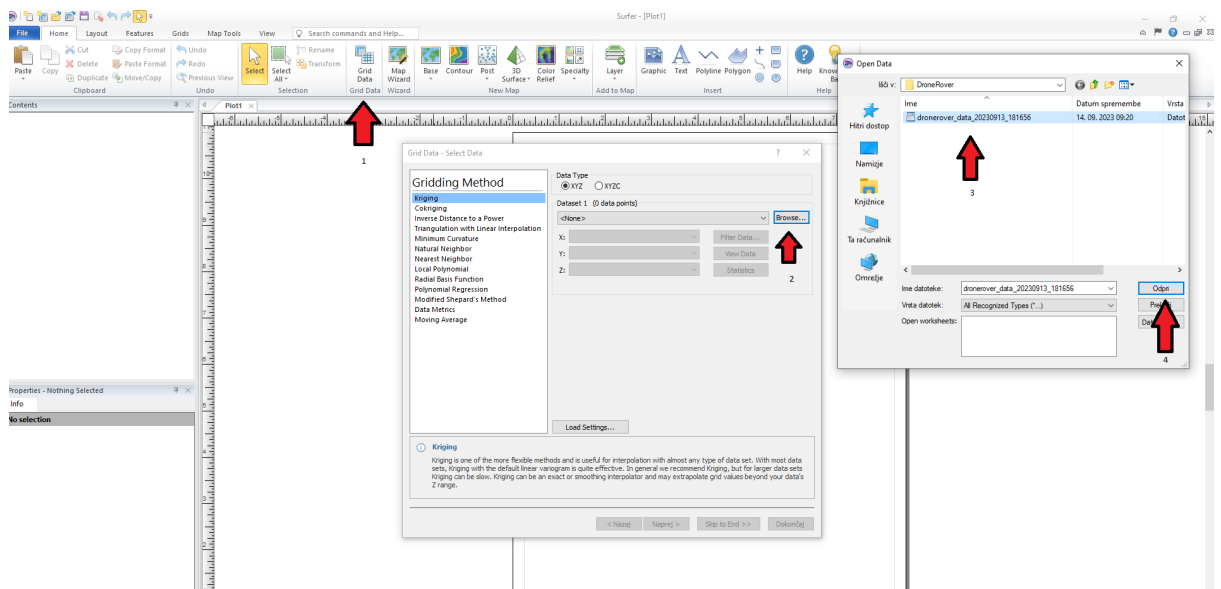
In this document we will show how to import DroneRover scan data into the Surfer and Google Earth program.

DroneRover App

1. After the Automatic or Manual Scan with DroneRover, press on export button to export the data
2. Export as Share CSV location

3D Surfer

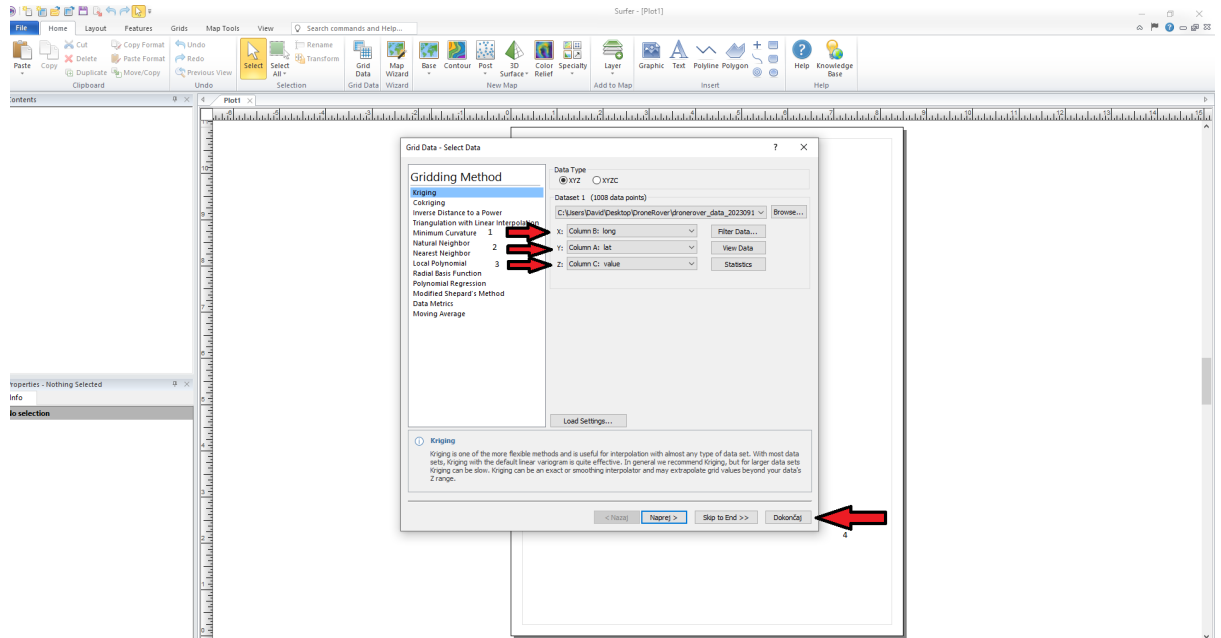
1. Download the Surfer software
<https://www.goldensoftware.com/products/surfer>
2. Install the Surfer software
3. Open the Surfer program and click the Grid Data button. Find and select .CSV file exported from the DroneRover and open it.



Loading the Data

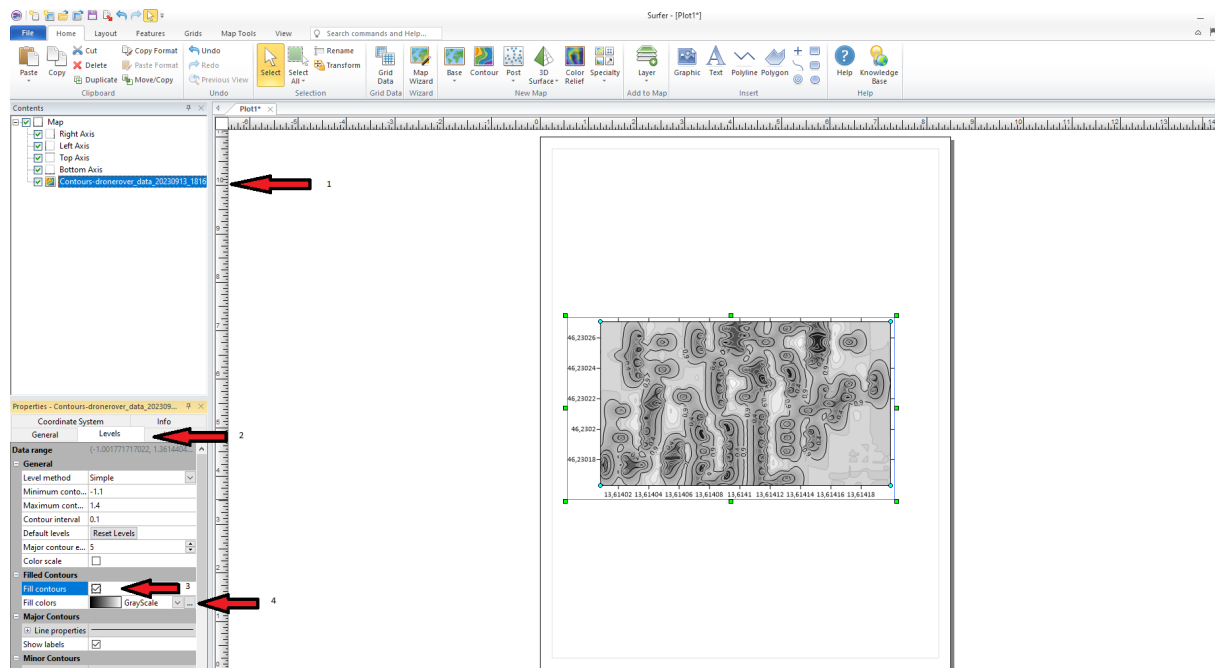
4. From the Data Columns select
 - X → Column A: long (Longitude)
 - Y → Column B: lat (Latitude)
 - Z → Column C: value

And press OK to convert the data.

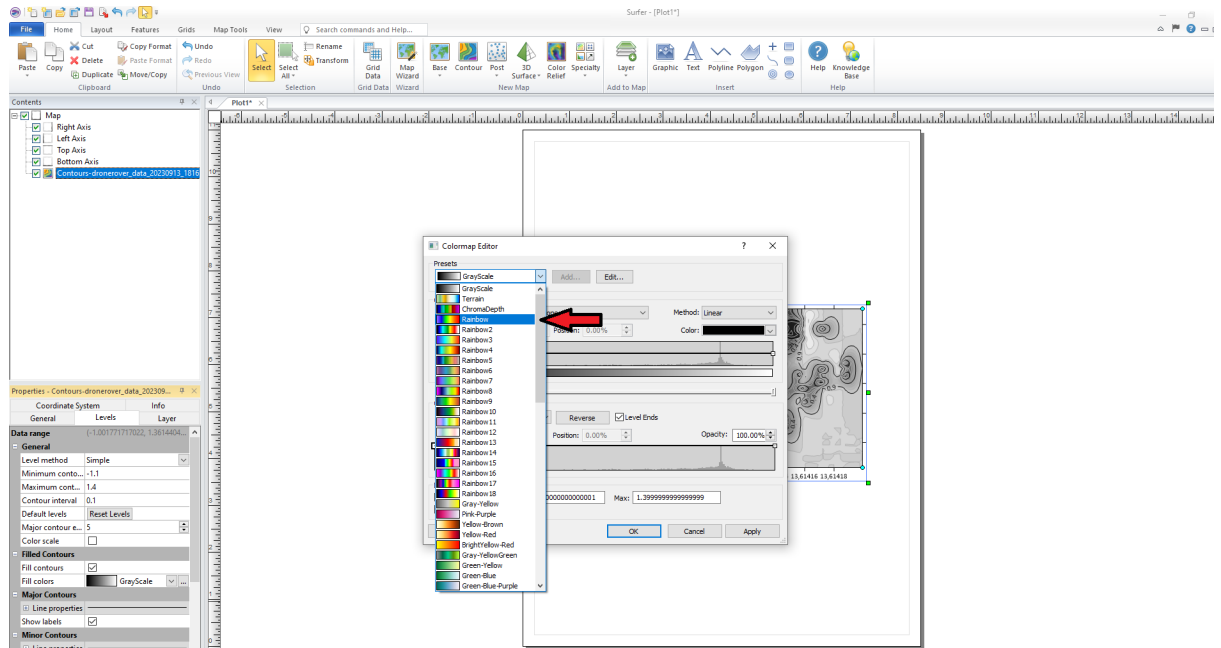


Data Convert

5. Now you can view the scanned data. This view can also be improved by adding color. To do this click on Contours-[your_file_name], select Levels menu, check the Fill contours checkbox and click “...” button under the Fill colors ... button

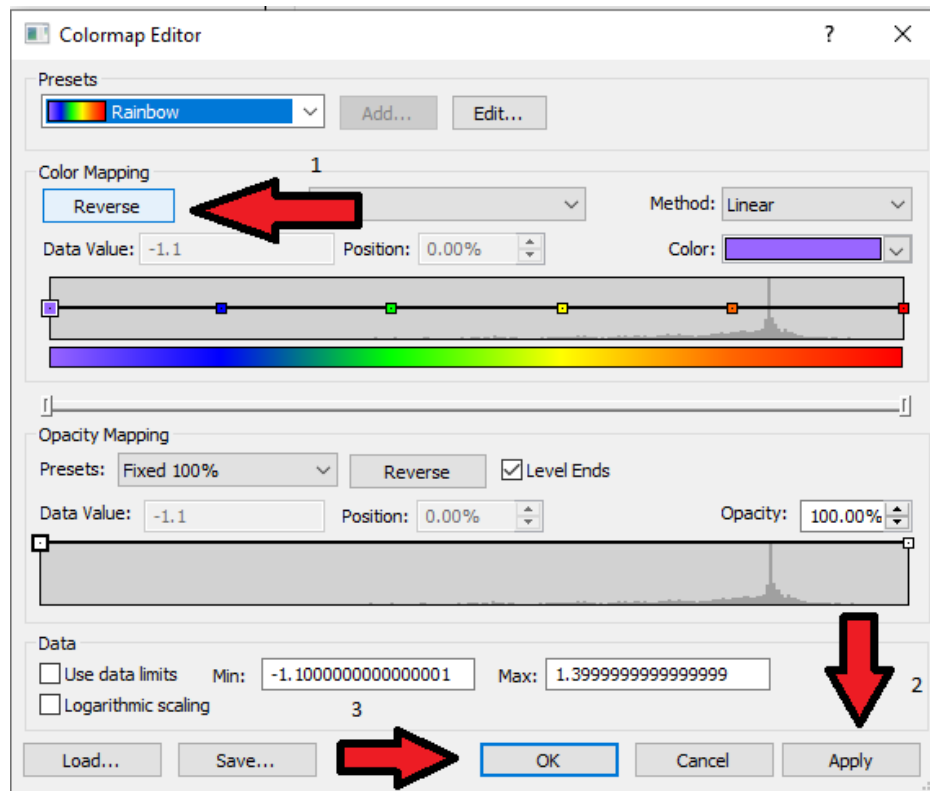


6. Select Rainbow color



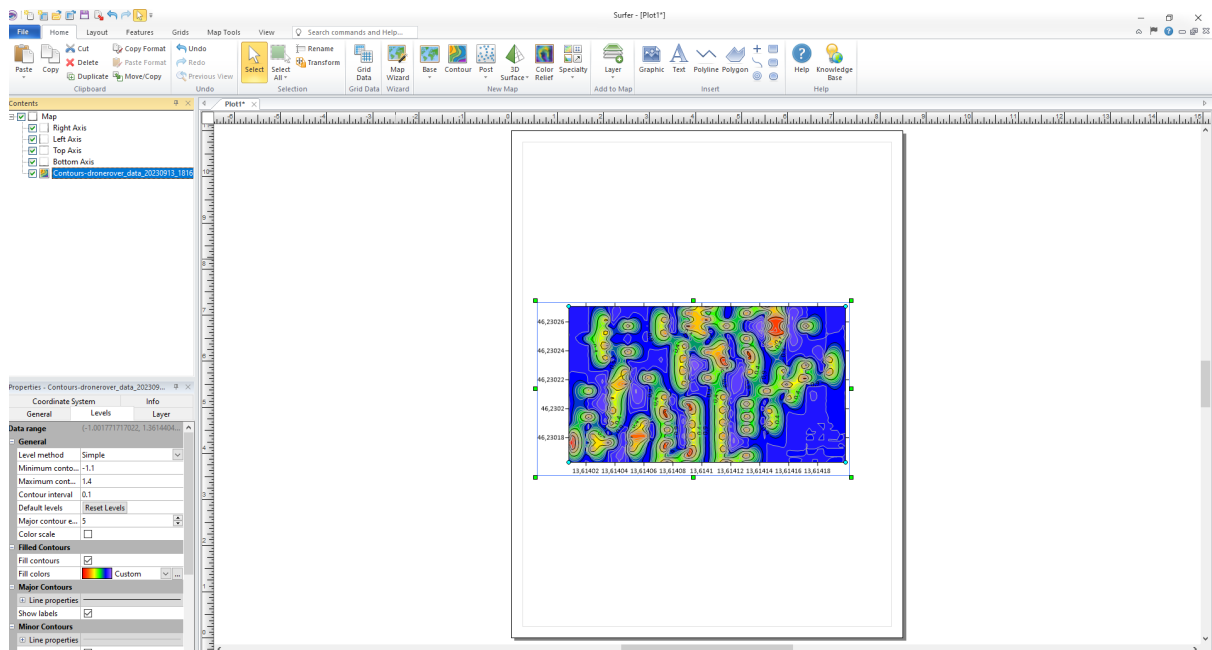
Selecting Colors

7. Click on the reverse button, then on apply and press OK.



Reversing Colors

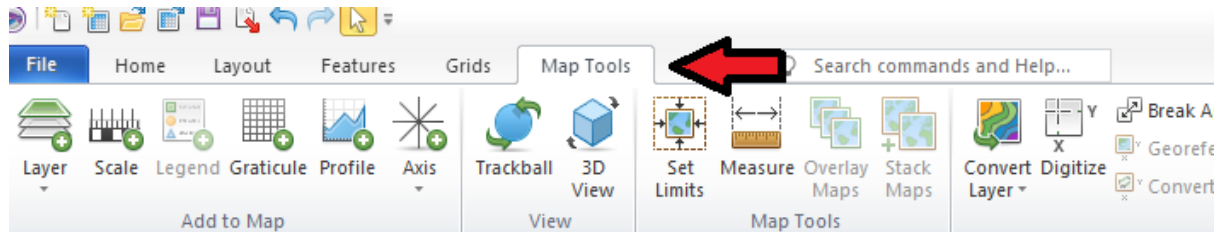
Now we have the image in colors



Picture in colors

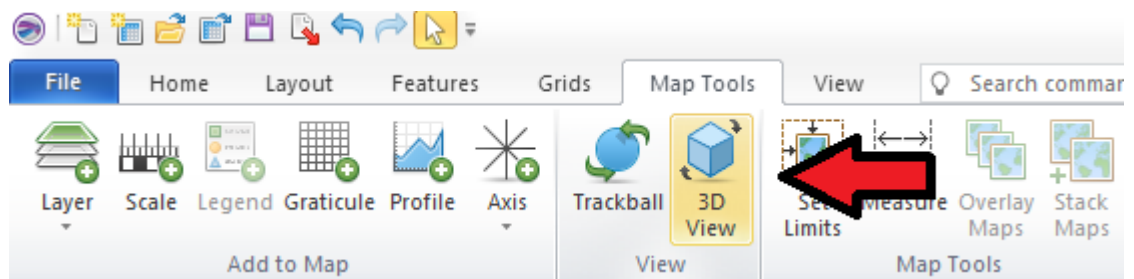
You can also create 3D view by clicking on Map Tools button and selecting 3D view

1. Click on Map Tools



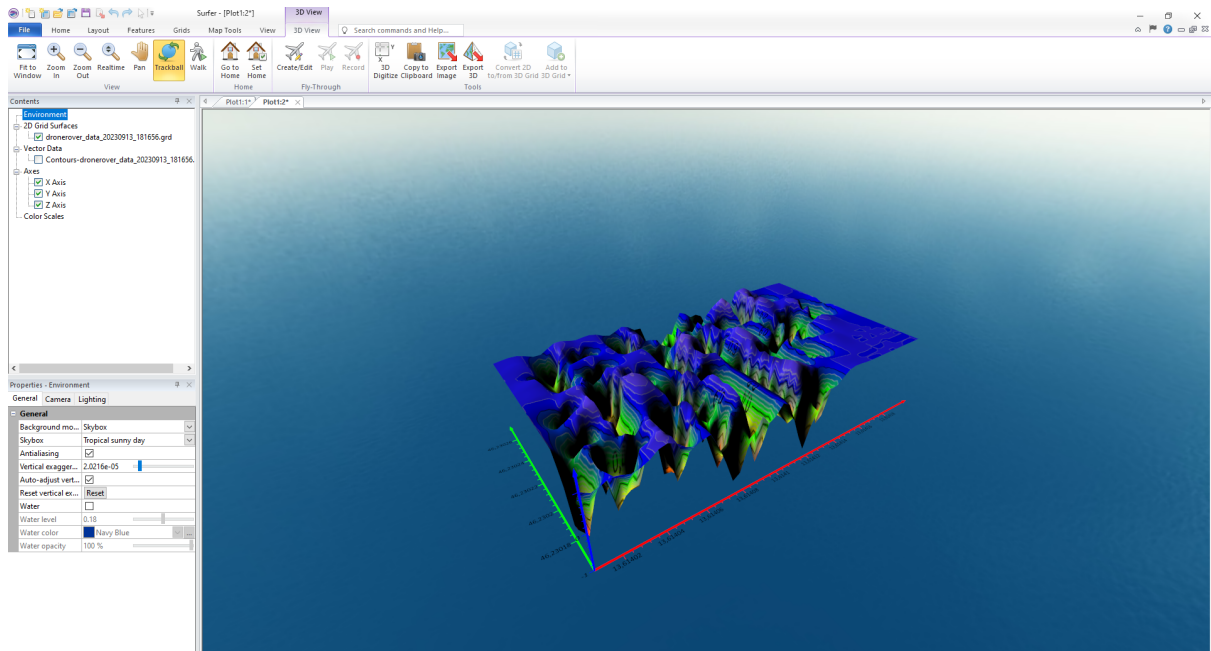
Map Tools

2. Click on 3D View



3D View

And now we have a 3D view of our scan.



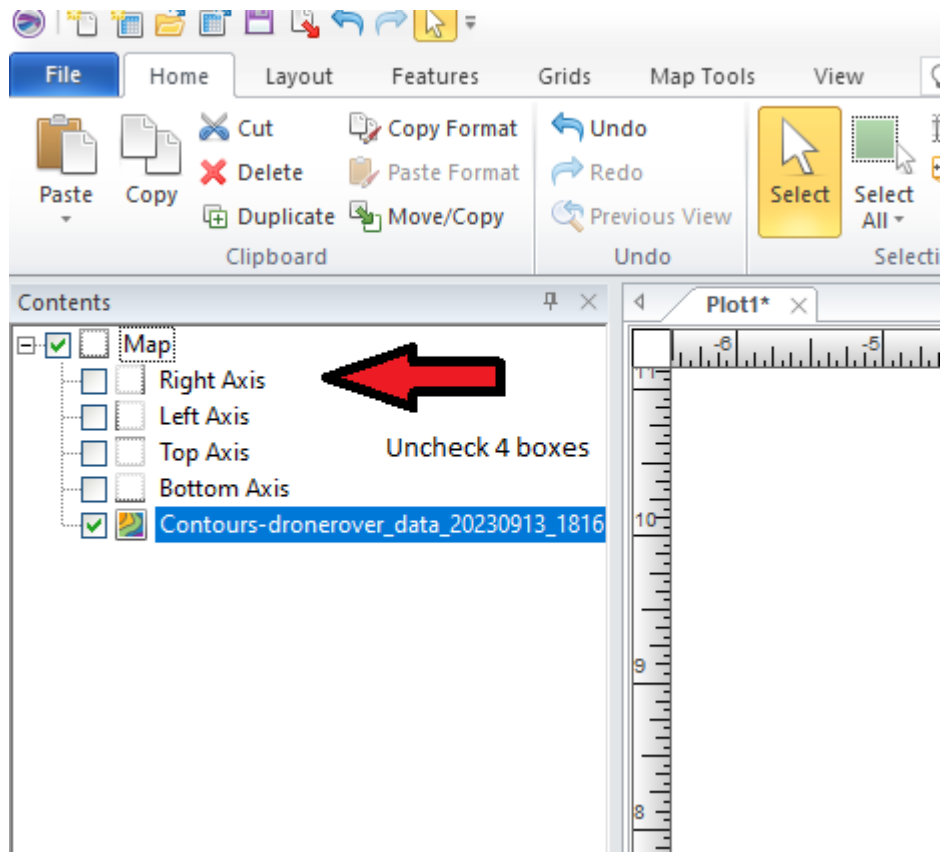
3D Scan View

GOOGLE EARTH

Now let's export the data to Google Earth.

Before that make sure that all axis checkboxes and lines options are cleared

1. Contents



Uncheck 4 boxes

2. Levels

Extend Line Properties of the **Major** and **Minor contours** and set them to Invisible

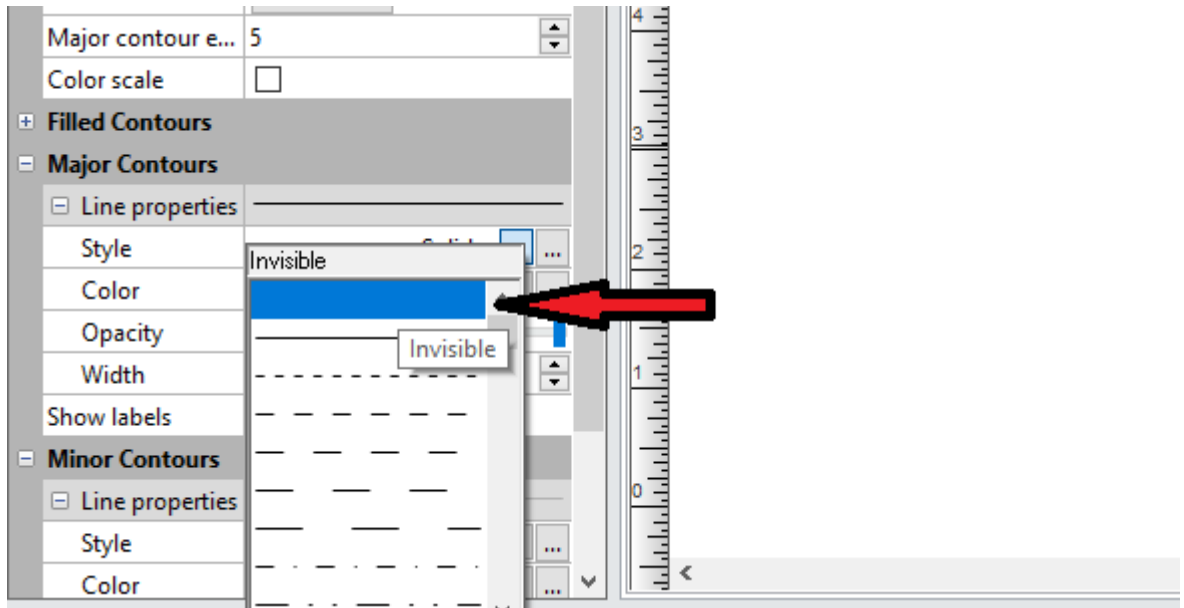
The screenshot shows the 'Properties - Contours' dialog box with the 'Levels' tab selected. The 'Major Contours' and 'Minor Contours' sections are expanded. Red arrows point to the '+' buttons next to the 'Line properties' field in both sections. A vertical ruler is visible on the right side of the dialog. Text annotations include 'Click on the + Button' and 'Extend the Properties'.

Coordinate System	Info
General	Levels
Data range (-1.001771717022, 1.3614404900...)	
General	
Level method	Simple
Minimum conto...	-1.1
Maximum cont...	1.4
Contour interval	0.1
Default levels	Reset Levels
Major contour e...	5
Color scale	<input type="checkbox"/>
Filled Contours	
Major Contours	
+ Line properties	
+ Show labels	<input type="checkbox"/>
Minor Contours	
+ Line properties	
+ Show labels	<input type="checkbox"/>
Labels	

Click on the + Button

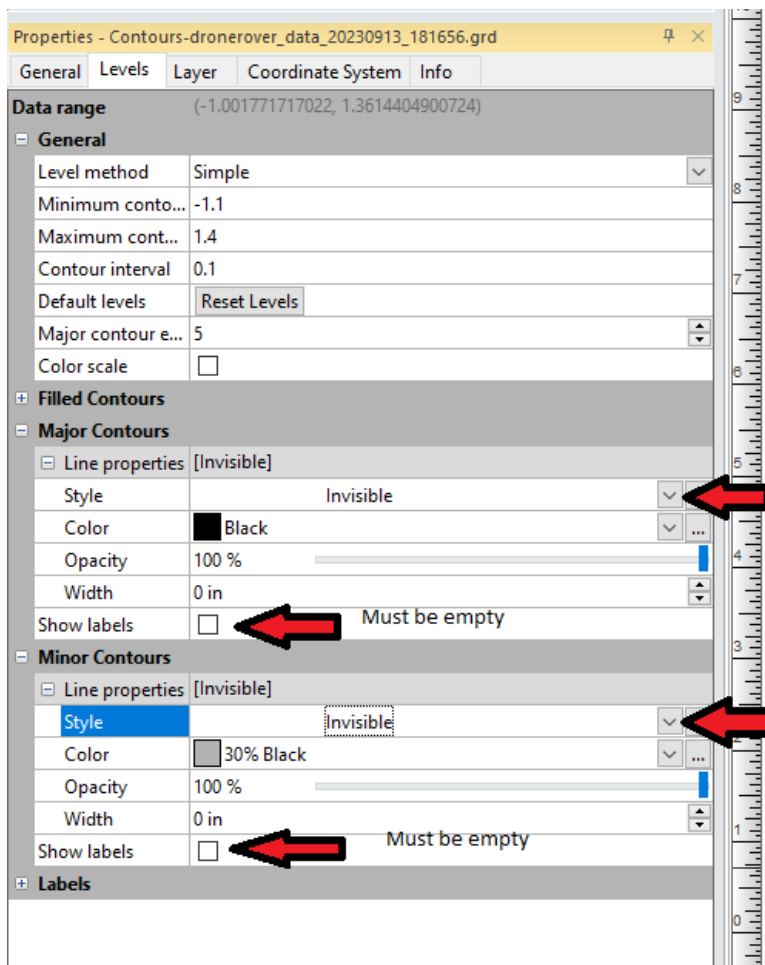
Extend the Properties

Set style to Invisible

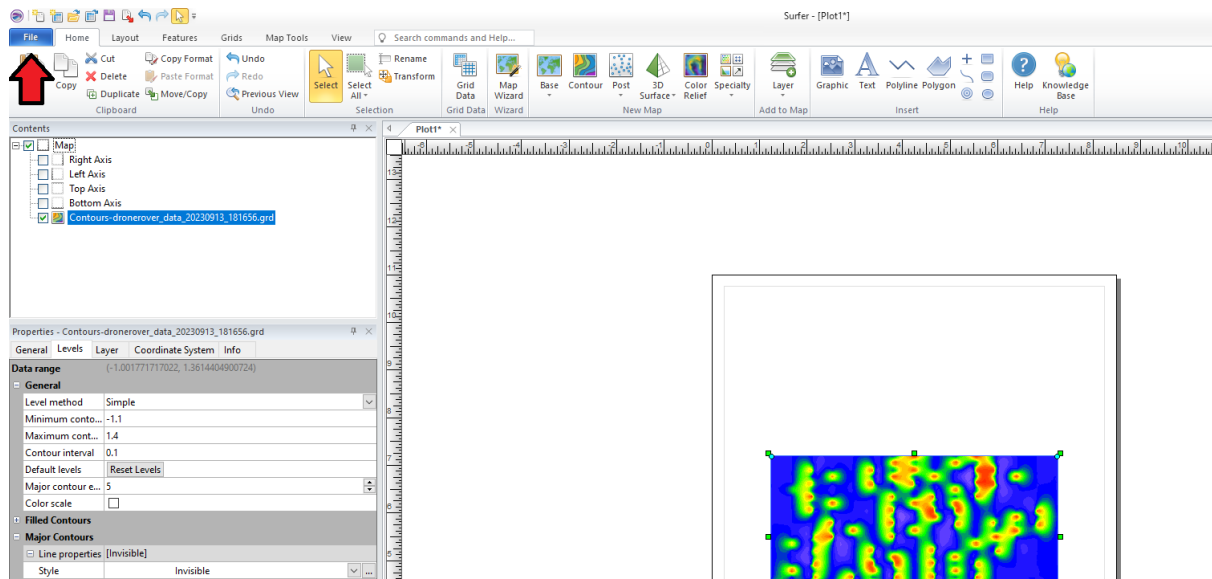


Set style invisible

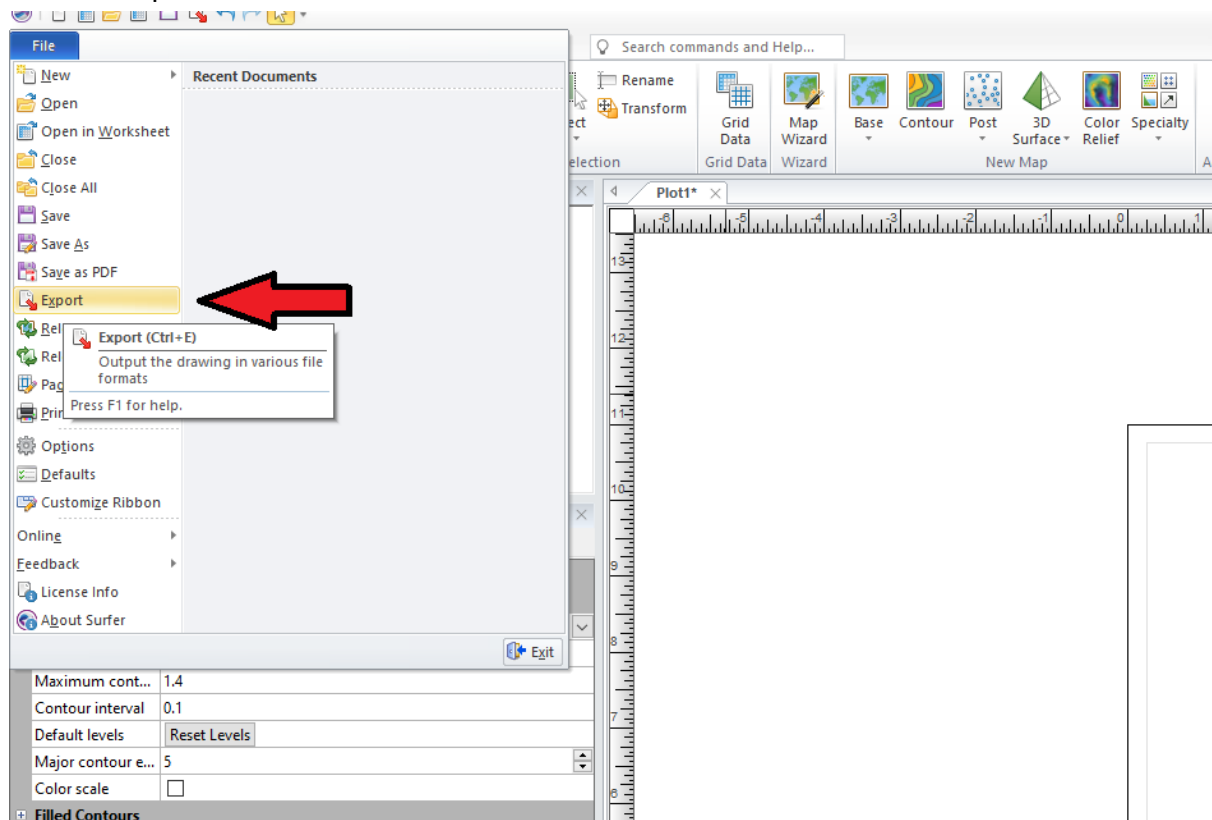
Repeat this also for the Minor Contours and make sure that show labels checkbox is unchecked



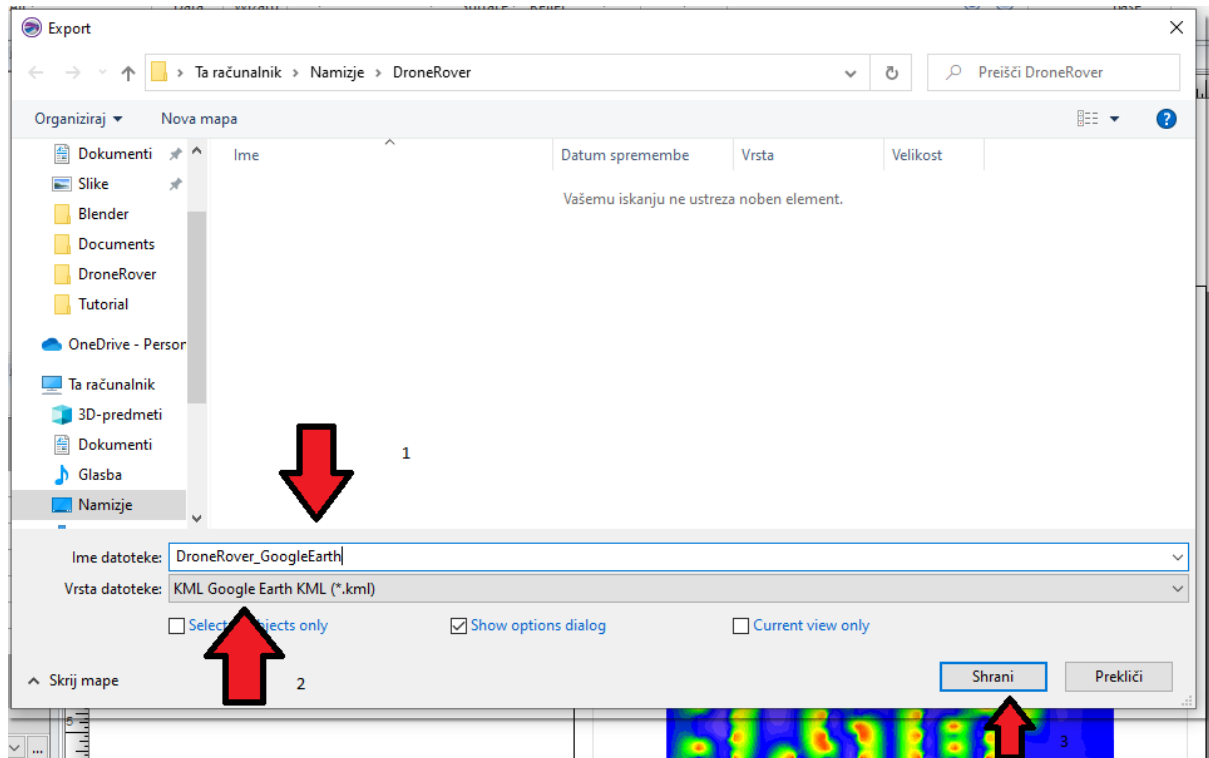
After clearing the options, choose File



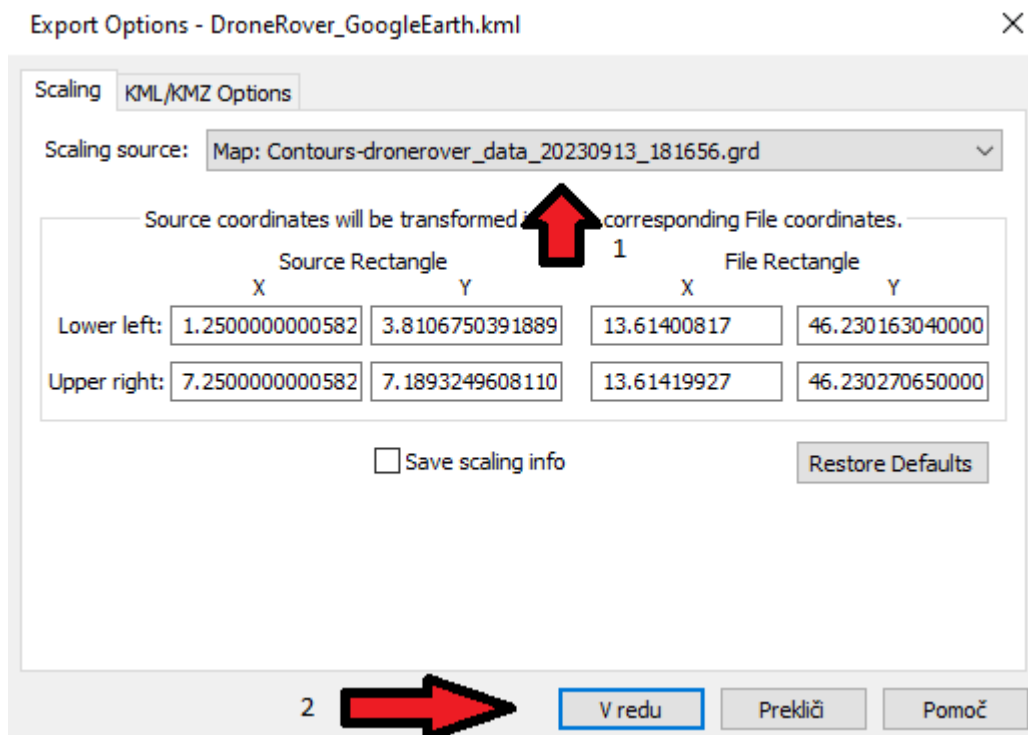
Click on Export



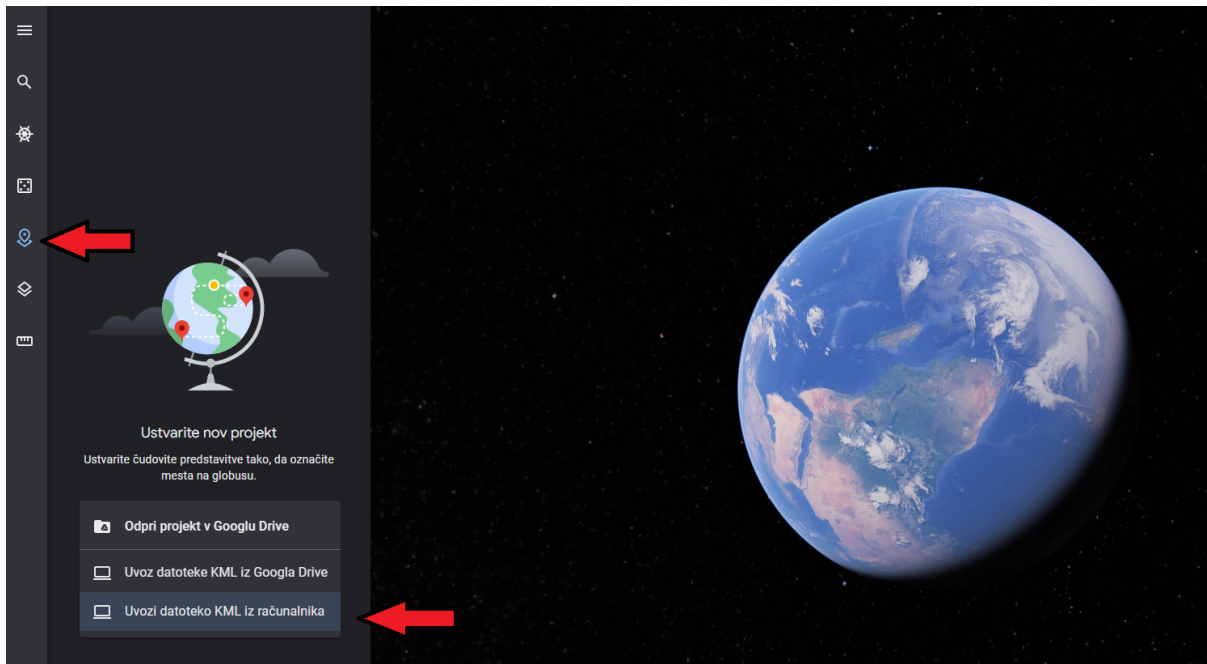
Enter the name of the file, select GoogleEarth KML format and click SAVE.



Make sure that the scaling source is → Map: Coutours-[your_file_name]

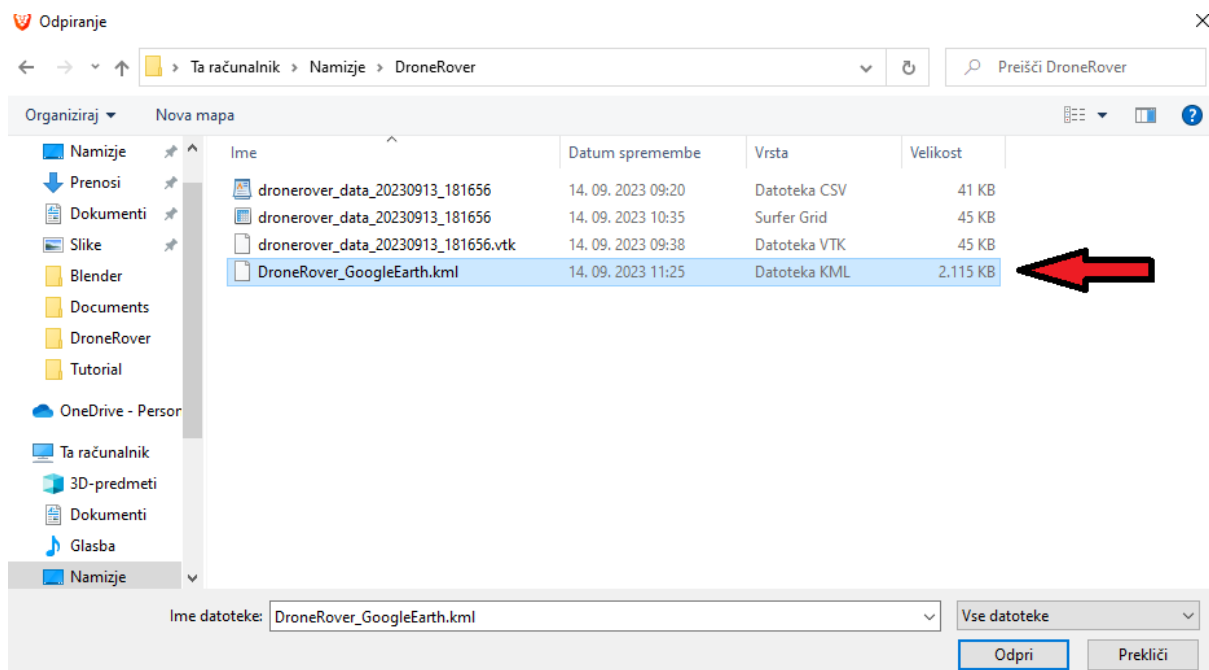


To open Google Earth, open your browser and go to <https://earth.google.com/>
Select "Projects" and click Import KML file from the computer

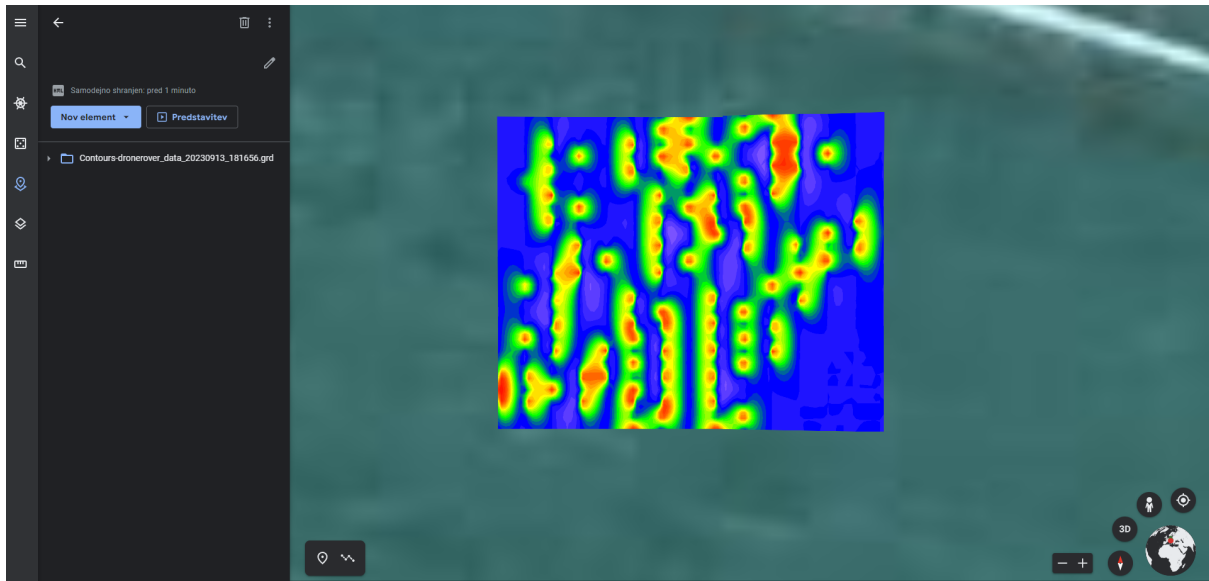


Import KML from computer

Select your file



And this is the final result. Full scan imported in Google Earth.



Final Result